

# Welcome To Clayton Croft



## Information for parents/carers and professionals.

Clayton Croft is purpose-built home for children and young people with a diagnosis of Autism and associated conditions.

Clayton Croft can offer 52-week placements for children and young people aged from 8 to 19 years of age.

This guide will tell you a bit about Clayton Croft  
Inside this guide is photos of different rooms and  
activities

You can visit Clayton Croft and talk to the staff about  
the things that are important to you before you move in.

Clayton Croft has two houses, Lavender house and  
Honeysuckle house

Clayton croft has 8 bedrooms, each bedroom has a wet  
room, toilet and wash basin

You can choose to have a single bed or a double bed

You can choose what colour paint you would like your  
bedroom painting

You can choose your own bedding

You can choose your own towels

You can choose the pictures on your walls

You can have a TV in your bedroom if you like.

You can choose how you want the lounge and kitchen to look

**IT'S ALL  
ABOUT  
YOU!**



Each house has a large lounge area with a TV which has Disney plus on it and a computer for you to play games and complete homework

There is comfortable chairs and sofas to sit and relax on

Each house has a kitchen with a table and chairs, lots of cupboard space and a fridge a freezer.

Each house has a washing machine so you can learn to do your own laundry with staff support.

Each house has a bath you can use if you don't want to use your shower

We also have games consoles which you can use.



Each house has a medical room where you can take your medication in private.

Clayton Croft has a very large activity lounge which has lots of games, arts and crafts and other fun activities.

The activity lounge also has notice boards which tell you about up and coming events that you can choose to take part in.

The activity lounge has a fish tank that you can help to look after if you would like to.

You can visit Clayton Croft if you would like to

Your family and friends can visit Clayton Croft if they would like to

Staff will visit you too before you move

# Safety

It is really important that we keep you safe and protect you from harm, this is called safeguarding.

Clayton Croft has rules in place for everyone the staff will talk to you about these and to your families about the rules before you move in

These include

- Medication
- Internet safety
- The doors having fobbed access
- Knives locked away

## keeping in touch with family and friends

It is really important to keep in touch with your family and friends and this can be done in various ways.

Your family can visit Clayton Croft

We can plan visits to take you home

You can talk on the telephone

You can make video calls

You can send emails

You can write letters



# HAVING FUN

We like to get out and about and do lots of different activities, we have notice boards and files that show you photos and pictures of different things we do.

We like all children to choose their own activities

Some of the things we do include:

- Shopping trips
- Nature walks, we have National Trust membership
- Seaside
- Theatres to see shows
- Meals out to places like KFC, McDonalds, and restaurants
- Swimming
- Cinema
- Soft play
- Horse riding
- Zoos and farms
- Trampolining
- Concerts
- Parks
- Train rides- we have a national rail card
- Looking at animals in the pet shop
- Museum visits

We have two minibuses and two cars that we can use for activities or we can go on the train, the bus or the tram



# Life skills

At Clayton Croft the staff team will support you to learn new skills these are called life skills.

It is important to learn life skills as they will help you when you leave at 19 years old.

We can support and help teach you and when you can do something by yourself or with only a bit of support we can work on new things.

Things like:

- Washing the pots
- Food preparation and cooking
- Using the washing machine
- Putting wet clothes on the washing line
- Putting your shoes on
- Tying shoe laces
- Money skills and budgeting
- Brushing teeth
- Washing hair
- Brushing hair
- Going to the hairdressers
- Following a shopping list

If there is something you really want to learn then please let us know and we will try our best

When you are old enough you could take part in work experience if you wanted to.

# School

Some children attend the Robert Ogden School which is next door to Clayton Croft.

Other children go to different schools.

The staff at Clayton Croft will support you with your homework and help you get ready every morning for school.

If you need any more information then please call us

Gemma Hart

Registered manager

01709 870720

[Gemma.Hart@nas.org.uk](mailto:Gemma.Hart@nas.org.uk)



Amy Mynett

Deputy Manager

01709 870720

[Amy.mynett@nas.org.uk](mailto:Amy.mynett@nas.org.uk)





On the next pages are some photos of Clayton Croft

# Bedrooms



You will have your own furniture in your bedroom



Each bedroom also has air conditioning in case you get too hot

# Bedrooms



Each room has its own walk in wet room, toilet and wash basin.

Each house has its own bathroom in case you would prefer a bath.



# Bedrooms

You can choose to have lots of things in your bedroom or you can just have a bed and furniture it is up to you.



Bring all your toys



Put up your favourite pictures



Choose your own bedding

Put up anything that is special to you

# Kitchens

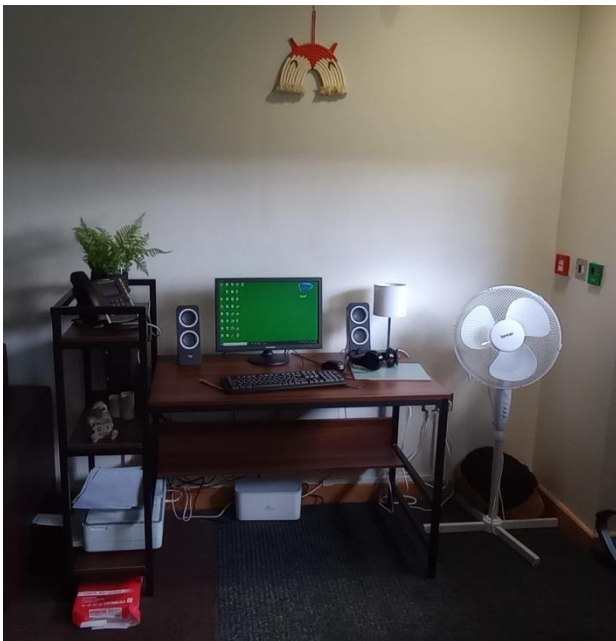
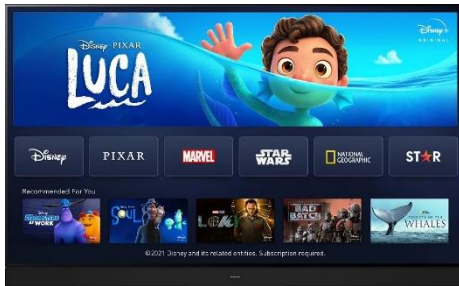


The kitchens have lots of different equipment that staff can support you to use.

You can store your own snacks in your own cupboard if you wish to and can have your own shelf in the fridge and freezer.

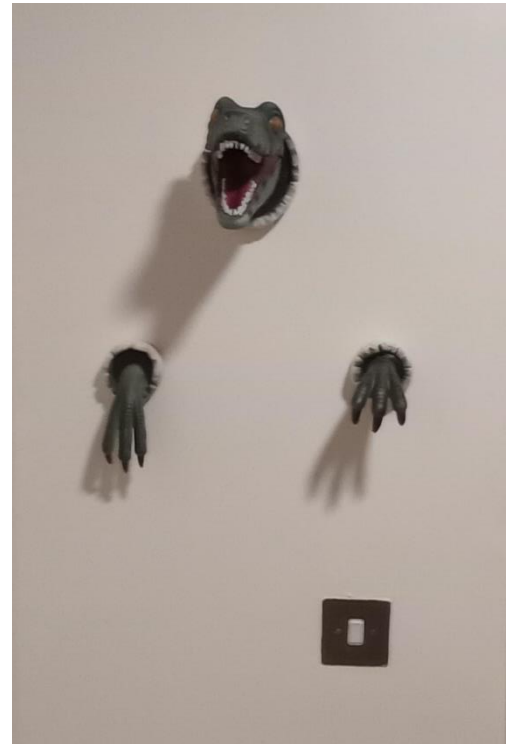
You can prepare meals and snacks and you can bake in the kitchen, staff will help and support you.

# LOUNGE



Each house has a large lounge to relax in, each lounge is comfortable and homely has a TV with Disney plus and a computer that can be used for games and homework.

# CORRIDOORS



The corridors are very spacious and fun, you might even meet Vera the velociraptor

# Garden



We have a very large garden that has play equipment such as a sunken trampoline, swing and climbing frame, we also have a basket ball net and a large court yard for outdoor party's and events



# Garden



In the warm weather we have water play in the padding pool



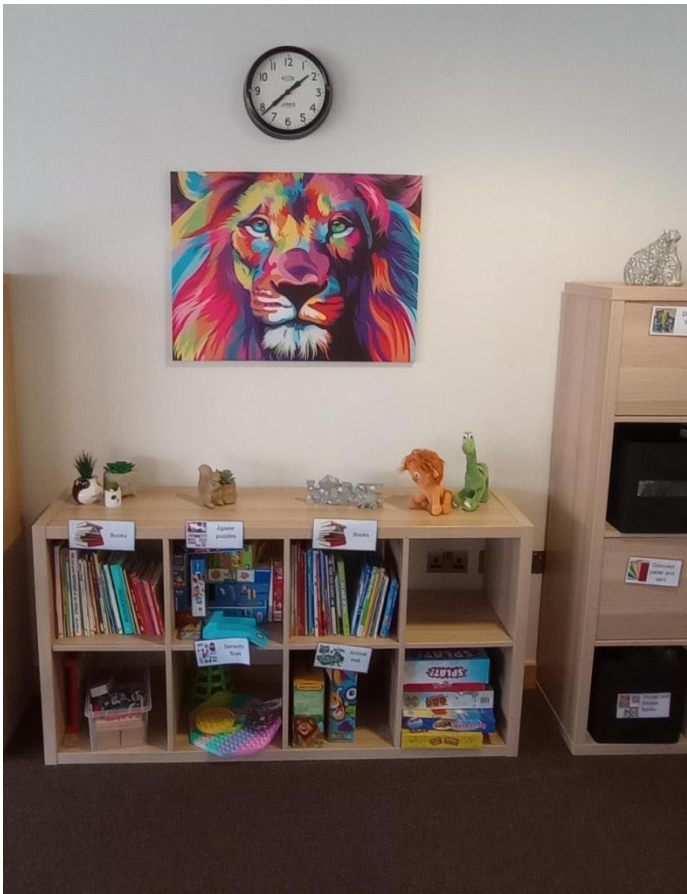
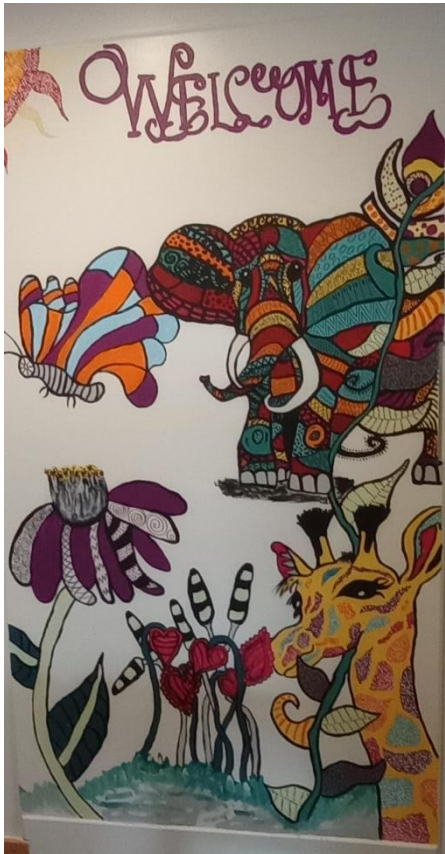
And picnics outside on the benches



There is also lots of space to play different sports like football



# Activities



We have a large activity lounge that has lots of things to use and play with  
Including:



A talking  
Thomas the  
tank engine  
train set



An air hockey  
table



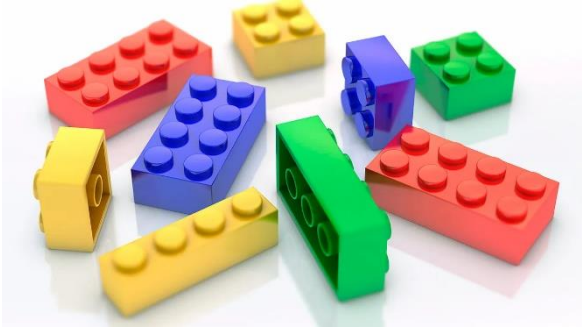
Table football



Xbox, were you can play games if you are the right age for them



Large TV with Disney plus, also lots of DVD's to watch



Lego sets



Arts and crafts



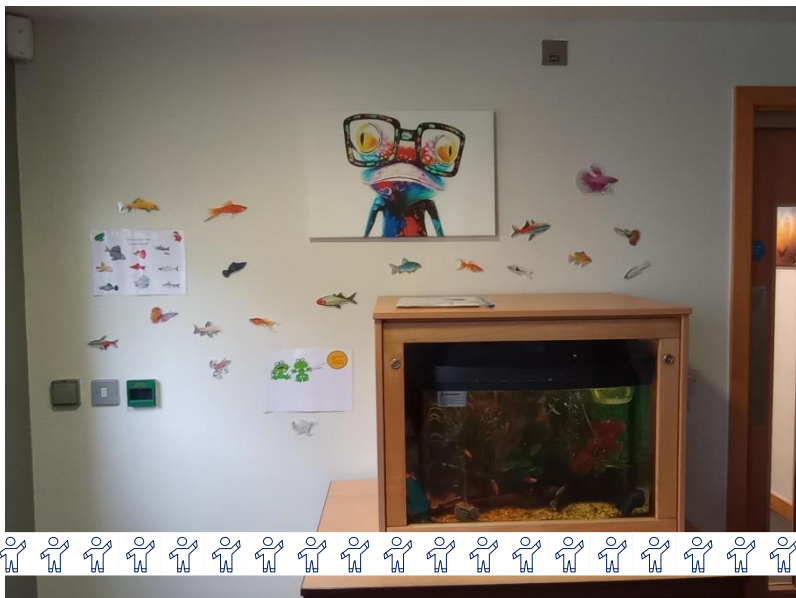
Board games



A large chalk board



A notice board with new activities



A fish tank with fish and frogs that you can help to look after



Musical instruments



Dinosaur race track and figures



Lots of sensory play

# COMPLAINTS

If you are ever unhappy, sad, scared or worried about something at Clayton Croft you can tell any member of staff.

You can use your own complaint form to make a complaint

You can call Ofsted and tell them.

You can call the children's commissioner for England and tell her.

Below are the details

**OFSTED**- 0300 123 4666.

Email address- [enquiries@ofsted.gov.uk](mailto:enquiries@ofsted.gov.uk)

**Children's commissioner for England**-Rachel De-Souza

0800 528 0731

[Help.team@childrenscommisssioner.gov.uk](mailto:Help.team@childrenscommisssioner.gov.uk)



We look forward to seeing you soon

Clayton Croft  
Children's Home  
The Robert Ogden School  
Clayton Lane  
Thurnscoe  
Rotherham  
South Yorkshire  
S63 0BG



For the admissions team call  
01709 874443

For further information about Clayton Croft please call

Gemma Hart or Amy Mynett

01709 870720

Or email

[Gemma.Hart@nas.org.uk](mailto:Gemma.Hart@nas.org.uk)

[Amy.Mynett@nas.org.uk](mailto:Amy.Mynett@nas.org.uk)